

DRAGON FALLS™

3D LOGIC PUZZLE



8+  1+



DRAGON FALLS™

3D LOGIC PUZZLE

INCLUDES

- 1 Game Base (with storage)
- 1 Waterfall Grid
- 1 Coral Dragon (1 Head, 1 Tail, 4 Body pieces)
- 1 Kelp Dragon (1 Head, 1 Tail, 4 Body pieces)
- 60 Challenge Cards and Solutions
- 3 Rock Blockers

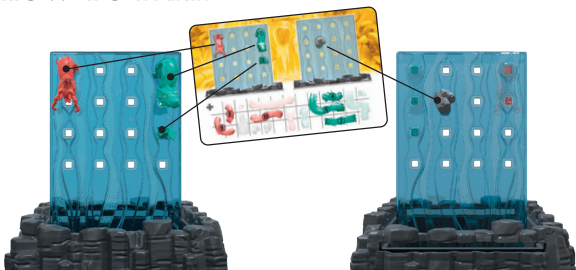
YOUR GOAL

Add Dragon Pieces to the Waterfall Grid to complete a scene of intertwining Water Dragons.

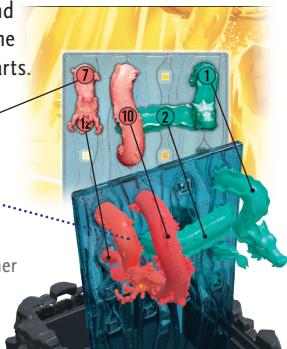
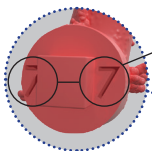
SET-UP

- Slide the clear Waterfall Grid out of the base and stand it upright in the slot at the center, with the square holes at the top.

HOW TO PLAY



- Select a Challenge Card, and place the pieces as shown on the top section of the card. Each of the two images represents one side of the grid, when it is facing you.
- Reference the Legend Card and the numbers on the ends of the pieces to select the correct parts.



NOTE: Taller pieces that extend further from the grid may overlap shorter pieces that sit closer to the grid.

- Gather the pieces highlighted in the “Add” section at the bottom of the Challenge Card.
- Add all of these pieces to either side of the Waterfall Grid, to make one or two complete dragons.

Note: You will build only one dragon in the Beginner level (Challenges 1-15), but two in the Intermediate, Advanced, and Expert levels (Challenges 16-60).

- When you have added all the specified pieces to the Grid, connecting pieces of the same color to complete the Water Dragons –**YOU WIN!**

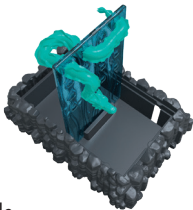
RULES OF PLAY

- Pieces shown in the Set-Up cannot be moved or re-oriented to solve the challenge.

TIP: In order to fit a shorter piece under a taller piece, you may need to remove a taller piece that was already set, then return it to its original place once the shorter piece has been placed.

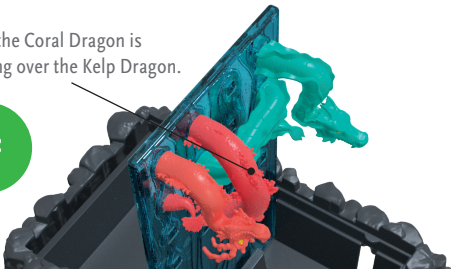
- A complete dragon consists of only one color/body type (coral or kelp), and must start with a head, end with a tail, and include any other pieces of the same type shown on the Challenge Card.

Note: Not all challenges will use all dragon pieces, so complete dragons will vary in size.

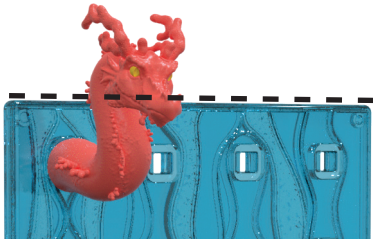


- A dragon piece must always connect to another dragon piece of the same color/body type on the opposite side of the grid.
- The square pegs on each piece must be placed in the same orientation as the square holes on the grid.
- Taller dragon pieces can cross over shorter dragon pieces and blockers.

Here, the Coral Dragon is crossing over the Kelp Dragon.



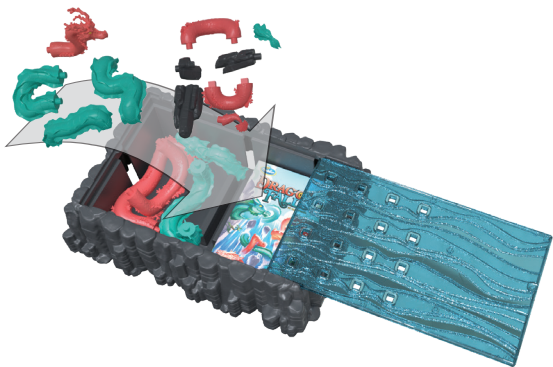
- The head of the dragons may not extend past the edge.



STORING THE GAME

When you are finished playing Dragon Falls, all of the Components may be stored in the base unit.

- Remove all pieces from the Waterfall Grid and remove the Waterfall Grid from the Base.
- Place the Challenge Cards flat at the bottom of the base.
- Carefully place these instructions and all Dragon Pieces and Rock Blockers on top of the Cards and in the other half of the base, adjusting them so that they lay as flat as possible.



ABOUT THE INVENTOR

David Yakos is an inventor, designer, artist, and engineer. As Co-Owner of Salient Technologies he is named on dozens of patents and has designed hundreds of products from Prototype-of-the-Year by Popular Science to cryogenic control valves for NASA's spacecraft. As someone who also loves creating fun, he licenses toy and game ideas out of his invention house, Streamline Design LLC.

ThinkFun's Mission is to Ignite Your Mind!®

ThinkFun® is the world's leader in addictively fun games that stretch and sharpen your mind. From lighting up young minds to creating fun for the whole family, ThinkFun's innovative games make you think while they make you smile.



www.ThinkFun.com

